



# Warbstow Primary Academy and Nursery

*Small and mighty is the Warbstow Way*

Head of School – Mr J Pritchard

16<sup>th</sup> January 2026

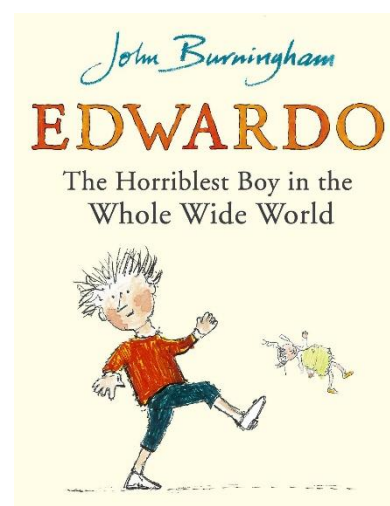
Dear Warbstow Families

## Attendance

We would like to extend a heartfelt thank you to our families for your continued efforts in ensuring children arrive at school each day. However, we must be transparent about a current challenge we face as a community. At present, our whole-school attendance sits at 92.8%, which is a significant decline compared to last year's impressive rate of above 96%. Every day in the classroom is vital for ensuring our children are **Ready** to learn and helps them develop the **Resilience** needed to succeed. Moving forward together, we are committed to working in partnership with families to understand any barriers to attendance and provide the necessary support. It takes effort from all of us to ensure our **Small and Mighty** community is present, settled, and purposeful, allowing every child the opportunity to thrive.

## Living Our Ways of Being

Every day across the whole school, we are maintaining a sharp focus on our core ways of Being: ensuring we are **Ready, Respectful, and Safe**. This focus is especially central to our whole school celebrations and assemblies, where we come together to reinforce our shared identity. These gatherings are essential for building a culture of mutual respect and safety for ourselves and each other. To support this, we shared the book *Edwardo* this week, a story that underpins the commitment we must all make—working in partnership—to create a supportive environment where everyone feels valued and safe.



## Timetable Adjustment

We're always looking for ways to make the school day run even smoother, so we're making a little tweak to our daily timetable! From the beginning of Week 3, morning break will move to **10:30 am – 10:45 am**. This change will enable us to make necessary adjustments to the curriculum, ensuring every session is as effective as possible. We will, of course, continue to monitor the impact of this change and look for adaptations moving forward to improve on all aspects of the school day. Thank you for your flexibility and support as we refine our routines to best serve our children.

## Celebrating the Warbstow Way

Well done to all our certificate winners for demonstrating what it means to be a great little learner!



## Illness

We encourage all families to review the illness notification guides below. These provide clear instruction on exclusion periods for specific conditions which is essential for our collective well being.

[Back to school – 5 things to do to help manage winter illness – UK Health Security Agency](#)

## Do I need to keep my child off school?



<b>Chicken Pox</b> Until all spots have crusted over	<b>Conjunctivitis</b> No need to stay off but school or nursery should be informed	<b>Diarrhoea &amp; Vomiting</b> 48 hours from last episode	<b>Glandular Fever</b> No need to stay off but school or nursery should be informed	<b>Hand, foot &amp; mouth</b> No need to stay off but school or nursery should be informed	<b>Impetigo</b> Until lesions are crusted & healed or 48 Hours after commencing antibiotics
<b>Measles or German Measles</b> 4 days from onset of rash	<b>Mumps</b> 5 days from onset of swelling	<b>Scabies</b> Until after first treatment	<b>Scarlet Fever</b> 24 hours after commencing antibiotics	<b>Slapped Cheek</b> No need to stay off but school or nursery should be informed	<b>Whooping Cough</b> 48 Hours after commencing antibiotics
<b>Flu</b> Until recovered	<b>Head Lice</b> No need to stay off but school or nursery should be informed	<b>Threadworms</b> No need to stay off but school or nursery should be informed	<b>Tonsillitis</b> No need to stay off but school or nursery should be informed		

## **After School Clubs**

There is still time to sign up, via ParentPay for our current after-school clubs. These sessions are designed to be an extension of our curriculum where children can further develop skills in our core values, particularly Curiosity, Creativity, and Resilience.

Monday	Friday
Ninja Warriors with Mr Dart Reception – Year 6 £15 for the half term	Lego & Games Club with Tilly, LJD Coaching Reception – Year 6 £12 for the half term

## **Key Dates**

20<sup>th</sup> – 22<sup>nd</sup> January – Reception Bikeability

**13<sup>th</sup> February – Inset Day**

**16<sup>th</sup> – 20<sup>th</sup> February – Half Term**

**25<sup>th</sup> – 29<sup>th</sup> May – Half Term**

**5<sup>th</sup> June – Community Cohesion Day**

24<sup>th</sup> – 26<sup>th</sup> June – Year 5 and 6 Residential

**24<sup>th</sup> July – Summer Break**

## **Third Party Disclaimer**

Reference to any specific third party activity, product or service does not constitute or imply it's endorsement, sponsorship or recommendation by Warbstow Primary Academy/Aspire Academy Trust. It is for information purposes only.





**WEDNESDAYS 5PM - 5:45PM**

STARTING 14<sup>TH</sup> JAN TO BOOK USE THE QR CODE OR  
FOLLOW [HTTPS://TINYURL.COM/382NTKAZ](https://tinyurl.com/382NTKAZ)

**LJD COACHING LIMITED**  
WORKING IN PARTNERSHIP WITH  
**CORNWALL FA STARTING WEDNESDAY**  
**14<sup>TH</sup> JANUARY**

**Why not come and join us? We are at Wooda Farm Holiday Park Sports Barn**




# JOIN THE PTA

## PTA Treasurer Needed



Our wonderful easygoing PTA group is looking for a new Treasurer to help us continue in fundraising for Warbstow Primary School!

This is a volunteer position, however would benefit from someone who is organised, familiar with maintaining records and have a reasonable head for figures.

Any Questions? Please get in touch

[Warbstowpta@gmail.com](mailto:Warbstowpta@gmail.com)



**CORNWALL & DEVON**  
School Age Immunisation Service  
Provided by Kernow Health CIC

**Flu Vaccination**

School Age  
Reception -  
Year 11

**Drop In Clinic**

**Saturday 24<sup>th</sup> Jan 2026**

**10:30 - 13:30**

**New St Austell Hub**  
**Chi Austel**  
**White River Place**  
**St Austell PL25 5AZ**

For more information  
please speak with a  
member of the team

Call us on  
**01872 221105**  
[kernowhealthcic.schoolimmunisation@nhs.net](mailto:kernowhealthcic.schoolimmunisation@nhs.net)